

THE PRAXIS LEARNING JOURNEY



Certificate in Youth Work
NZ Diploma in Youth Work



www.praxis.org.nz



ABOUT:

We are practitioners in youth work who are passionate about developing a new generation of leaders who make a positive difference in the lives of young people.

Praxis is a Community of Educators who provide training and support for youth workers across eight countries in Australasia and the Pacific Islands.

In NZ, Praxis offers short workshops and a range of NZQA accredited qualifications in youth development. Full time courses offered by Praxis are approved for student loans and allowance funding.

COURSES:

Full time courses are taught through a series of four residential block courses, plus a day per week in class. Block courses are around a week long each and are normally held at campsites or on marae. Attendance at all block courses and class days is a course requirement. Classes are generally not held during the school holidays, however students are generally expected to continue with their practical youth work (through their agency placement) during the school holidays.

Block course dates for the following year will be on the Praxis website from 1 September each year. Full time courses begin with an orientation in the first week of February (classes start at the end of the following week) and end in November

Praxis Certificate in Youth Work

(Level 4, one year full time)

This programme provides an entry qualification in youth work – it is ideal for a person who wants a year of personal and spiritual growth as they explore getting involved in their community through a church or community organisation. It is designed to lead to a vocation or career in working with young people in the context of their whanau and community.

Completion of the programme leads to the award of the (NZQA) New Zealand Certificate in Health and Wellbeing (Social and Community Services), Level 4 with a strand in Community Facilitation. This programme is subject to approval from NZQA.

NZ Diploma in Youth Work

(Level 6, two years full time)

This programme is for people who want to pursue a career in youth work and are confident in study at a tertiary level. The Diploma blends an academic focus with practical experience in leadership. Graduates of the Praxis Diploma can apply to enter the final year of the Bachelor in Youth Development programme through Weltec.

Career Pathways

71% of the 2016 Praxis graduates found paid work in the youth work sector. This included roles in community organisations, churches and being part of multi-disciplinary teams in health or education.

20% continued in further study with other institutions, and most were able to use their academic work with Praxis (at Diploma level) to gain cross credit into courses at undergraduate degree level and above. Many who graduate a Certificate level also find that they have gained in confidence and motivation around academic study.

It is quite common for a person to begin as a general youth development practitioner and then carry the skills they have learned into more specialised fields. Recent Praxis graduates have moved from youth work into; counseling, teaching, leadership in churches, outdoors leadership, management roles and overseas aid/development.

Short Workshops

Praxis offers a range of short workshops in youth development, these are generally one or two days each, and can be tailored to the professional development needs of an organisation or youth worker network. We generally offer discounted rates to other staff in organisations who also have a student on the Praxis course.

Frequently requested workshops include::

- Response Ability Pathways (RAP) is a 2 or 3 day workshop.
- The Educator Programme 3 workshops of 2 days each leading to the National Certificate in Adult Teaching and Training (level 4, 40 credits)
- Planning Restorative Outcomes (PRO) (1 or 2 days)
- Trauma Awareness (1 day)
- Cultural competence (anything from an hour to a lifetime!)

Please contact admin@praxis.org.nz or visit our website to get more information on workshops..



ENTRY REQUIREMENTS

The following requirements apply to Praxis courses only:

- The minimum age for entry into a Praxis course is 18.
- Praxis courses are taught from a Christian kaupapa, we don't mind where you are at on your spiritual journey if you don't mind that we pray and include a faith focus in our learning.
- All Praxis courses require each student to be based in an Agency - a church or community organisation that is willing to supervise and support your practice with young people in your community. We can provide suggestions, but this arrangement is your responsibility and must be set up before you can complete enrolment.
- We require all prospective students to have their police record checked by Praxis as part of the application/approval process. A criminal record does not mean that your application will be automatically turned down.
- On the application form you will be asked to provide us with the contact details of a person from your proposed agency AND at least one other reference person (not a member of your family) with whom we can discuss your suitability for working with young people and your ability to handle the academic requirements of the course.

COURSE ACCREDITATION

Praxis is a Private Training Establishment that has been granted registration by the New Zealand Qualifications Authority under Part 18 of the Education Act (1989).

Full time students are eligible to apply for student loans and allowances through a WINZ office or at www.studylink.govt.nz

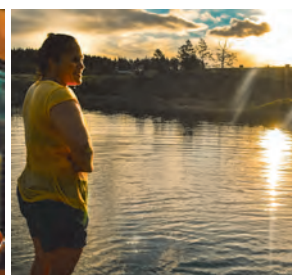
NZQA has given Praxis an external Quality Assurance of Provider Category 2. Following a review by NZQA in October 2015:

- NZQA is Confident in the educational performance of Praxis
- NZQA is Highly Confident in the capability in self-assessment of Praxis

A full review report is available on the NZQA website, search; Youth Cultures and Community Trust.

WHAT WOULD I LEARN AT PRAXIS?

- To operate safely and ethically as a youth worker in your community.
- To build connections with and walk alongside people of different cultures and backgrounds to your own.
- To contribute to the development of young people and respond appropriately in a crisis.
- To creatively facilitate groups and work effectively one to one.
- To provide leadership and work as part of a team.
- To explore your own spiritual journey, giftings and motivations.
- To research your own community, develop networks and respond to needs.
- To improve your awareness of Maori language, tikanga, kawa (protocol) and consider the relevance of the Treaty of Waitangi to your practice as a youth worker.
- To explore and integrate Christian faith in your work with young people.



HOW MUCH DOES IT COST?

Fees for full time courses are subject to final approval by NZQA. Our provisional fee structure for 2019 is:

Certificate in Youth Work \$4,700

Year 1 Diploma \$4,870

Year 2 Diploma \$4,500

Your fees cover: Tuition fees, workbooks, plus food and accommodation at block courses.

You will still need to pay for: travel to block courses and required texts. Course related costs are costs related directly to the programme you are taking. You can claim up to \$1,000 from Studylink each year towards these costs. This becomes part of your student loan and will need to be paid back. The following are course related costs that you should consider:

Required texts: \$60

Block 1 (travel to Wellington –in February)

Block 2 (travel to Christchurch or Wellington –in May)

Block 3 (travel to Turangi –from Wellington or Auckland for \$60 return –in July)

Block 4 (travel to Christchurch in September)

HOW DO I APPLY?

The Tertiary Education Commission places a limit on the number of places available in our full time courses. We encourage you to apply as early as possible –applications for the following year open on the 1st of October (and close February 1st OR when the course is full). We will accept people based on a first come/first serve basis based on when the enrolment process (see below) is completed. Once a course is full we will offer to wait-list you in case someone else pulls out.

Please follow this process to apply:

1. Use the APPLICATION FORM off the Praxis website OR contact us (see details below), we will email it to you and get in touch arrange an interview.
2. We need to receive THREE things back from you before we have the interview:
 - The Application Form (with name and contact details of your reference people)
 - A letter of support from your Agency
 - A letter from you about your previous experience in working with young people and your reasons for wanting to do the course (if you are applying online, this question is included in the form).
3. We will check out your references before we meet.
4. It is fine if you want to bring a support person to your interview, if we can talk to a person from your proposed Agency as part of the interview it makes things a lot easier. At the interview you will be asked to disclose if you have any convictions and complete a Police Check form (we will need to re-interview you if this check shows up things that you haven't disclosed at your interview).
5. We will aim to let you know as soon as possible after the interview if you have been accepted for the course.
6. If you have been accepted we will give you an Offer of Study letter and an ENROLMENT PACK. You will need the Offer of Study letter to apply for Students Loans and Allowances.
7. Once you have confirmed that you want to take up the Offer of Study AND we have your completed Enrolment Form your place on the course is confirmed (please note that it is not confirmed until this point).
8. We will normally have an Orientation Event for students from your area in the first week of the course. This will give you the chance to meet other students and get any final information. Classes will start at block one in the following week.

PRAXIS NATIONAL ENROLMENT OFFICE

PO Box 6834 Marion Square, Wellington 6141 NEW ZEALAND

Phone: 04 471 2747

Email: admin@praxis.org.nz

www.praxis.org.nz

 Praxis New Zealand

